

FLORA®

Digital Inkjet Printing Equipments Manufacturer

www.floradigital.com.cn

Flora XTRA320K-1024i Hi-Speed Large Format Printer



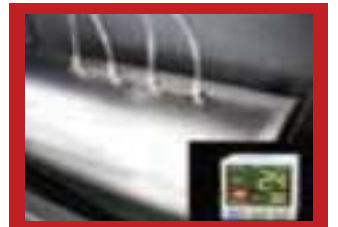
Print Head Carriage



Geniune PP12 Software



Heavy Structure



Negative Pressure System



- KM 1024i Print Head(13pl)
- 4/8 print heads/4 colors
- Draft quality up to 243 sqm/hr
- Printing width up to 3.20m
- Resolution up to 720 x 1440dpi

TECHNICAL SPECIFICATIONS

Print head	4/8 KM1024i printheads (13pl)		
Productivity		4 Heads	8 Heads
	Draft Mode (2pass)	120sqm/h	243sqm/h
	Speed (3pass)	80sqm/h	160sqm/h
	Production (4pass)	60sqm/h	120sqm/h
	Quality (8pass)	30sqm/h	60sqm/h
Print resolution	Up to 720 x 1440 dpi		
Technology	Piezoelectric inkjet		
Ink types	EcoSolvent ink		
Ink Configuration	Standard CMYK		
Ink Cartridge size	2.5L		
Rip Software	Photoprint Flora Edition 12,MengTai6.0		
Color Management	ICC based color, adjustment curves, density adjustment		
File format	Tiff, Jpeg, Postscript, EPS, PDF etc		
Media/Handling			
Handling	Industry Feeding & Take-up System with Tension System		
Roll-feed media support	Support flexible media up to 330 cm wide, with a roll dimension 30 cm, up to 100kg. in weight		
Connectivity			
Interfaces	Fast standard USP Port		
Dimensions (l x w xh)			
Printer	492x96.5x155cm		
Shipping	502x108x165cm		
Weight			
	950 KG		
Electricity Request			
Temperature	20 to 30°C		
Relative Humidity	35%-65%, non-condensing		
Power			
Heater	7000W		
System	3800W		
ReQuirments	Input voltage: 210 to 230 VAC, single -phase, 50/60 Hz, 16 A (for System), 35A (For		
Warranty			
	One year limited warranty		

*Subject to change without prior notice.