



Digital Inkjet Printing Equipments Manufacturer

www.floradigital.com.cn

Flora XTRA320SG-PLUS

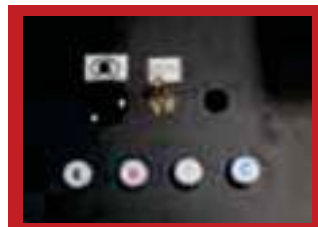
Large Format Printer



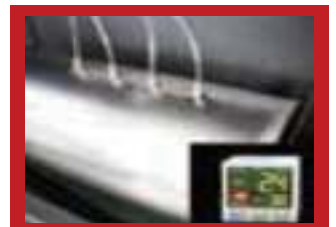
SG 1024 Print Head



Sub tank Circulation System



Independent ink Purging System



Negative Pressure System



- SG 1024 Print Head(10/25pl)
- 2/4/6 print heads/4 colors
- Draft quality up to 366sqm/hr
- Printing width up to 3.20m
- Resolution up to 720 x 1200dpi

TECHNICAL SPECIFICATIONS

Print head	2/4/6 SG1024 Print Heads(10pl/25pl)		
Productivity		4 heads	6 Heads
	Draft Mode (2pass)	251sqm/h	366sqm/h
	Speed(3pass)	165sqm/h	245sqm/h
	Production(4pass)	125sqm/h	183sqm/h
	Quality(6pass)	82sqm/h	122sqm/h
Print resolution	Up to 720x1200dpi		
Technology	Piezoelectric inkjet, Grayscale Technology		
Ink types	Solvent ink		
Ink Configuration	Standard CMYK		
Ink cartridge size	2.5L		
Rip software	Photoprint Flora Edition 12		
Color Management	ICC based color, adjustment curves, density adjustment		
File format	Tiff,Jpeg,Postscript, EPS, PDF,etc		
Media/Handling			
Handling	Industry Feeding & Take-up System with Tension System		
Roll media support	Support flexible media up to 330cm wide, with a roll dimension 30cm, up to 100kg in weight		
Connectivity			
Interfaces	Fast standard USB Port		
Dimensions (l x w x h)			
Printer	495x120x163cm		
Shipping	502x108x165cm		
Weight			
	950KG		
Electricity Request			
Temperature	20 to 30 °C		
Relative Humidity	35%-65%, non-condensing		
Power			
Heater	7000W		
System	3800W		
Requirements	Input voltage: 200-240VAC, single-phase, 50/60Hz, 16Amp(For System); 35Amp(For Heater)		
Warranty			
	One year limited warranty.		

*Subject to change without prior notice.