



Digital Inkjet Printing Equipments Manufacturer

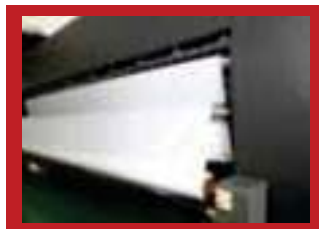
www.floradigital.com.cn

Flora XTRA320UV-G5

Hi-Speed Large Format Roll to Roll UV Printer



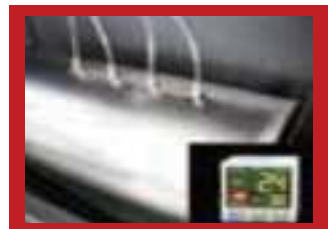
Standard 4 Color, 4 level of GrayScale



Feeding System



Monitor



Negative Pressure System



- GEN5(7pl) Printhead,
- Standard 4 color, up to 6 print heads
- Draft quality up to 71 sqm/hr
- Printing width up to 3.20m
- Resolution up to 605x 1200dpi

TECHNICAL SPECIFICATIONS

Print head	4/6 GEN5 Print Heads(7pl)										
Productivity	<table border="0"> <tr> <td></td> <td>6Heads</td> </tr> <tr> <td>Draft Mode (3pass)</td> <td>71sqm/h</td> </tr> <tr> <td>Speed(4pass)</td> <td>55sqm/h</td> </tr> <tr> <td>Production(6pass)</td> <td>37sqm/h</td> </tr> <tr> <td>Quality(8pass)</td> <td>29sqm/h</td> </tr> </table>		6Heads	Draft Mode (3pass)	71sqm/h	Speed(4pass)	55sqm/h	Production(6pass)	37sqm/h	Quality(8pass)	29sqm/h
	6Heads										
Draft Mode (3pass)	71sqm/h										
Speed(4pass)	55sqm/h										
Production(6pass)	37sqm/h										
Quality(8pass)	29sqm/h										
Print resolution	Up to 605x1200dpi										
Technology	Piezoelectric inkjet, Grayscale Technology (7 to 21 pl)										
Ink types	LED ink										
Ink Configuration	Standard CMYK										
Ink cartridge size	2.5L										
Rip software	Photoprint Flora Edition 12										
Color Management	ICC based color, adjustment curves, density adjustment										
File format	Tiff,Jpeg,Postscript, EPS, PDF,etc										
Media/Handling											
Handling	Industry Feeding & Take-up System with Tension System										
Roll media support	Support flexible media up to 330cm wide, with a roll dimension 30cm, up to 100kg in weight										
Connectivity											
Interfaces	Fast standard USB Port										
Dimensions (l x w x h)											
Printer	495x120x163cm										
Shipping	502x108x165cm										
Weight											
	950KG										
Electricity Request											
Temperature	20 to 30 °C										
Relative Humidity	35%-65%, non-condensing										
Power											
System	2650W										
Requirements	Input voltage: 200-240VAC, single-phase, 50/60Hz, 16Amp(For System); 35Amp(For Heater)										
Warranty											
	One year limited warranty.										

*Subject to change without prior notice.