



Digital Inkjet Printing Equipments Manufacturer

[www.floradigital.com.cn](http://www.floradigital.com.cn)

**Flora XTRA3220UV / XTRA2512UV**

**Flora PP3220UV-G / PP2512UV-G**

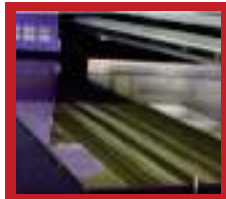
**Hi-Speed UV flatbed Printer**



Variable Color Configuration  
+ Easy Upgrade



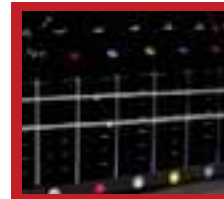
Automatic Anti-crash  
Sensor



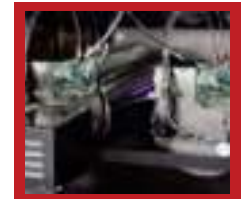
Automatic Registration  
Pin System



Automatic Media Thickness  
Measurement System



White Ink Recirculating



Dual Automatic Adjustment  
Negative Pressure System



Model	PP3220UV-G / PP2512UV-G	EXTRA3220UV / EXTRA2512UV
Print Head	2~8 Ricoh Print Heads (7-21pl)	4~16 KM 1024i Print Heads (6-18pl)
Express Production Mode	45 sqm/hr	100 sqm/hr
Quantity Mode	35 sqm/hr	70 sqm/hr
Ultra Quality	24 sqm/hr	50 sqm/hr
	17 sqm/hr	37 sqm/hr
Resolution	Up to 605x1200 dpi	Up to 726x1440 dpi
Print Technology	Piezoelectric inkjet, Grayscale Technology	
Ink Types	LED inks	
Ink Configuration	4C/6C, W&V(Optional)	
Ink cartridge size	2.5 liter	
Image process Software	Photoprint Flora Edition 12	
Color management	ICC based color, adjustment curves, density adjustment	
File format	Tiff, Jpeg, Postscript, EPS, PDF, etc	
<b>Media</b>		
Handling	True vacuum table, automatic media registration pin system for easy loading Media blow up function make it easy to unload media (Optional)	
Print Size	2.00 x 3.20m	2.54 x 1.22m
Substrate Weight	50kg/m <sup>2</sup>	50kg/m <sup>2</sup>
Thickness	Up to 100mm	
<b>Connectivity</b>		
Interfaces	USB 3.0	
<b>Curing System</b>		
	Dual shuttered UV lamps, Independent user selectable control of shutter and two power level/LED	
<b>Dimensions</b>		
Printer	430 x 410 x 147cm	480 x 260 x 144cm
Shipping	430 x 230 x 165cm	500 x 216 x 150cm
Weight	2500kg(With Roll to Roll)	2000kg(With Roll to Roll)
<b>Operating Conditions</b>		
Temperature	20 to 30°C	
Relative Humidity	35%-65%, non-condensing(With synthetic media 40% min. recommended to avoid static electricity; with paper-based media 60% max. recommended to avoid buckling)	
<b>Electricity Request</b>		
Power Rate	8000Watts	
Requirement	Input voltage: 200 to 240VAC, single-phase, 50/60 Hz, 32A	
<b>Warranty</b>		
	One year limited warranty(Please contact your local dealer for accurate data)	

\*Subject to change without prior notice.